

MC 100S

RADIO-REMOTE CONTROL ON DRIVING, STEERING, BOOM MOVEMENTS, WINCH AND OTHER ACCESSORIES

FRONT-WHEELS DRIVE WITH COUNTER ROTATION

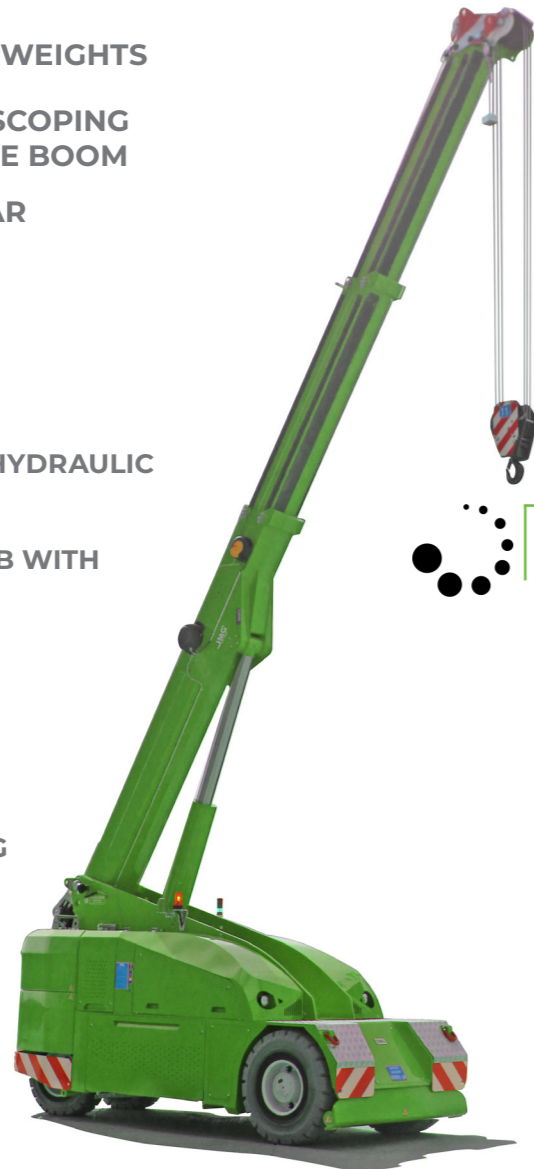
REMOVABLE COUNTERWEIGHTS

HYDRAULICALLY TELESCOPING PROPORTIONALLY TYPE BOOM

FRONT STABILISING BAR

Options :

- HYDRAULIC WINCH
- HYDRAULIC JIB WITH HYDRAULIC EXTENSION
- BENDABLE MANUAL JIB WITH MANUAL EXTENSION
- NON-MARKING TIRES
- HYDRAULIC FORKS
- MAN BUCKET
- ATEX CONVERSIONS
- CUSTOMIZED PAINTING

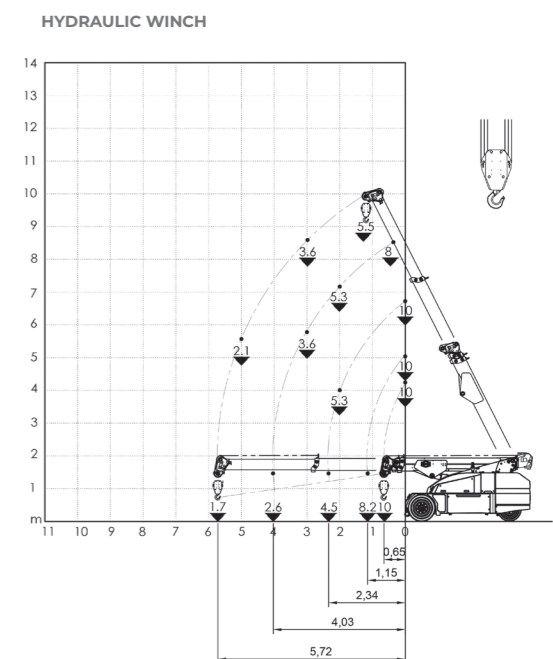
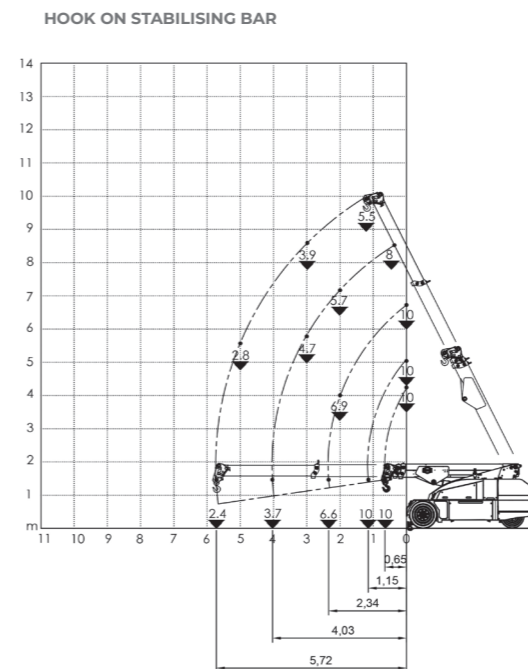
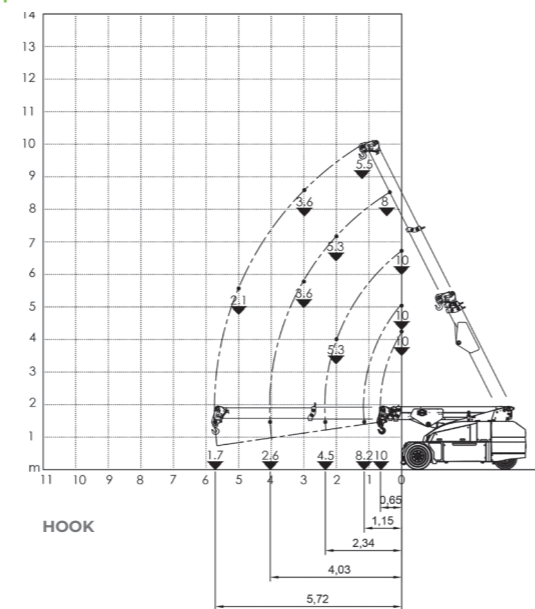


Technical features

Max Capacity kg	10,000
Dimensions mm	3800x1500x1949

Front-wheels drive. 2 electric motors AC 7,5 kW 80V Insulation class H	LMI. Electronic safe load indicator and tilting moment limiter
Total Kg. 11,400 Removable counterweights Kg. 4,100	Automatic braking system on all wheels
80 V - 810 Ah 8 working hours	Fabricated from preformed and welded quality steel plate
Front nr. 2 superelastic 355-15" Rear nr. 2 superelastic 250-15"	+65°/-10°
Rear Steering angle -90°/+90°	Motor driven pump 20 kW - 80 V AC, Insulation class H

Load charts



EU Standards CE

	UNI ISO 4301-2: A1
	2006/42 CE-2014/30 UE-2014/35 UE- 2000/14 e and subsequent modifications
	EN 13000:2014 ANSI/ASME B30.5-2011 and subsequent modifications



Dimensions

